



FISHER MONTHLY UPDATE



December 2022

Hello and Happy (almost) December!

I hope you all had a wonderful Thanksgiving holiday and are looking forward to more holiday celebrations or time with family and friends...and hopefully a little bit of a break as we look towards a New Year!

I appreciate all of the positive responses to this new format of updates. Hopefully, it serves the purpose of getting you the information you need in a simple and digestible format. Please continue to share your feedback!

I want to thank our fabulous **PAC Fall Gala Committee: Andrea Besharat, Aimee Mandolini, Audrey Moreno, Devon O'Leary, Travis Keeley and Bo Sutton**, one more time for all of the hard work they put into our Fall Gala that proved to be quite a success! Thank you to everyone who attended and to those who could not attend, but contributed to the silent auction and wine pull, bid on auction items or donated from afar.

Congrats to our Wine Pull Contest Winners: The Purple Coyotes!

We raised over \$10,000 through the Gala this year and look forward to putting the monies raised towards tuition assistance for families in need, and items to enhance our playgrounds and the Motor Room for all children at Fisher.

We will post some of our Teacher Experiences that still have spots (namely mine...womp, womp) and try building our puzzle once again. Look out in the Front Hallway for these opportunities!

Lastly, please note that we are stopping biweekly COVID testing. We will test classrooms if there is

a close contact exposure (i.e. a staff member or child in the classroom tests positive). With the exception of biweekly testing for staff and children, all other procedures outlined in the [COVID Update in November](#) will be followed.

Fisher staff and children are welcome to get a test at DU during [testing hours](#). Please reach out to Hema or Yoshie if you have questions.

Thank you and stay warm!
Hema

UPCOMING EVENTS

December 1 Feeding Inservice
December 4-5 WISH Boutique Fundraiser
December 5-9 Scholastic Book Fair
December 13 Cookie Drive
December 23 Early Closure (12pm)
December 26-30 & January 2 Winter Break
(Fisher Closed)

January 16 Martin Luther King, Jr. Day (Fisher Closed)
January 17 Professional Development (Fisher Closed)
January 30 Illegal Pete's Restaurant Fundraiser

BIRTHDAYS

December
None!

January
3 Holly Penta (PC)
5 Alex Kogstad (FST)
28 Betsy Low (FIT SW)

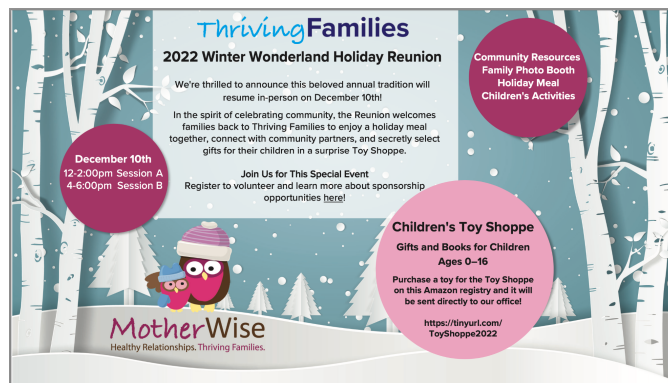
February
3 Danielle Einck (FST)
4 Anna Burnett (PC)
4 Kristen Kelly (LB)
27 Xané duToit (DSS)

Fisher is proud to support Thriving Families' 2022 Winter Wonderland Holiday Reunion

Each year, FELC is proud to work with Jessie Purcel (CB parent) and support [MotherWise](#), a local program that supports women, children, and their families during pregnancy and just after a baby is born. Through December 7, Fisher will host a toy drive and will be seeking new toys for children 0-5 years old valued between \$10-\$20.

Donations can be dropped off in our front hallway in the collection box or purchased [online](#).

Register to volunteer at their event and learn more about sponsorship opportunities [here](#).



Parent Advisory Council News
RESTAURANT NIGHTS ~ FUNDRAISING EVENTS (local and online) ~ YEAR-ROUND
FUNDRAISERS ~ COMMUNITY BUILDING EVENTS ~ and MORE!!!!

Scholastic Book Fair
December 5-9
(online December 5-18)
Motor Room

Thank you to Sherri and Evan Stinson for helping us coordinate this year's Winter Book Fair!

We need help with manning the cash register at drop off and pick up next week.
 Please use [this link](#) to sign up! It's super easy!



WISH GIFTS
fundraiser
DECEMBER 4TH & 5H

10% of all sales using the code on 12/4/22 & 12/5/22 will be donated to
FISHER EARLY LEARNING CENTER
 5014 EAST HAMPDEN AVE, DENVER, CO 80222
 750 S UNIVERSITY BLVD, DENVER, CO 80209

USE CODE: FELC
 AT CHECKOUT ONLINE OR
 MENTION THE CODE IN-STORE
 **ONLINE CODE VALID 12/4/22
 THROUGH 12/7/22**

WISHGIFTSDENVER.COM
 VOTED BEST GIFT SHOP 6 YEARS
 VOTED BEST KIDS' BOUTIQUE 5 YEARS

MINTED'S FUNDRAISING PROGRAM

shop. save. support.

We're partnering with Minted this holiday season. Get 20% off all holiday cards and gifts with our exclusive discount code, and Minted will donate 15% back to us. That's getting in the holiday spirit!

Use code: **FundraiseFELC**



minted.
 A MARKETPLACE OF INDEPENDENT ARTISTS



Cookie Drive!

Our annual, delicious Cookie Drive will be on
Tuesday, December 13.
 Dig out your favorite recipes for this sweet event!
 More to come from PAC.



King Soopers Community Rewards Competition

***Our October contest winner is the HH
Classroom with 86% of families enrolled!***

***BUT we still need more/all Fisher families to
register!
IT IS VERY EASY!***

*Register your King Soopers digital account by
scanning the QR code or following these
[directions](#). After you register your KS account,
add your child's name to the class competition
board by the front doors.*

*Also, an easy way for Fisher to receive more
fundraising is sharing the QR code with family
and friends. We normally bring in around \$3000
from this fundraiser each year. We hope to get
closer to \$5000+ this year!*



Already signed up?

Add your child(ren)'s name(s) to the board in the front hallway.

Need to sign up?

Do it...today!

<5 minutes of time for +\$10,000 for Fisher!

King Soopers will give a portion of purchases back to Fisher when customers register for Community Rewards online. It could bring in +\$10,000 to Fisher per year.

How to register?

Scan this and follow the directions on the page



OR watch this video that shows you how to
<https://fb.gs/3zso6u>
Organization Name: Fisher Early Learning Center

WE BRING BALANCE ONE TO-DO LIST AT A TIME

T U L A

Could you use more time in your day?

- Meal Prep
- Meal Planning
- Errands
- Event Planning
- Research and Planning
- Shopping
- Household Management
- Organization
- +More!

Purchase as many or as few hours
as you need, we're here for it all.
TULA is your personal assistant at
the touch of a button!

10% of your purchase will go
back to the FISHER PAC.



www.tulabalanced.com
[@tulabalanced](https://www.instagram.com/tulabalanced)
Use promo code
FISHER to get 10% off
purchase!

JANUARY
30



FISHER FUNDRAISER!

Illegal Pete's
1744 E. Evans
January 30th | 4 - 7pm

Help support Fisher Early Learning Center! 50% of all proceeds from 4pm -
7pm on January 30th will go to Fisher. Includes all dine-in, call-in orders,
carry out and gift cards.

LOVEVERY

Read below and check out the toys displayed in our front hallway.

Lovevery gives families a support system for a brighter future. The Play Kits were designed by experts to give your child exactly what they need—and love—as they develop. Lovevery links brain science and Montessori philosophy to the way you play and delivers a box full of stage-appropriate playthings straight to your home every 2–3 months. Lovevery wants you to feel confident you're giving your baby the best play essentials to help them grow, explore, and learn—all through the joy of play.

\$20 Off Promo Code: LOVEFISHER20; Code Duration: Valid through 12/31/22

LOVEVERY.

Lovevery gives families a support system for a brighter future. The Play Kits were designed by experts to give your child exactly what they need—and love—as they develop. Lovevery links brain science and Montessori philosophy to the way you play and delivers a box full of stage-appropriate playthings straight to your home every 2–3 months. Lovevery wants you to feel confident you're giving your baby the best play essentials to help them grow, explore, and learn—all through the joy of play.

Five reasons why parents love The Play Kits

- ✓ The right toys at the right time for stage-based play
- ✓ Convenient delivery to your home every 2–3 months
- ✓ Confidence you're giving your baby the best start
- ✓ A support system for early learning
- ✓ Modern, minimal and Montessori-inspired design

Lovevery's play essentials give you

- ✓ More confidence
- ✓ More convenience
- ✓ Less clutter & chaos
- ✓ A support system for early learning
- ✓ Comfort knowing your child's toys are safe and sustainable

Our Materials

From our packaging to our Playthings, Lovevery uses sustainable and safe materials to deliver the quality your child deserves.

What's good for our children is also good for the planet we share.

- Efficient packaging to reduce waste
- 100% FSC-certified, sustainably sourced wood
- 100% organic cotton in our Playthings and Home Collection
- OEKO-TEX® certified fabrics in our Home Collection: responsibly made for the environment and your loved ones
- Recycled paper
- Soy-based ink
- Plastics free from BPA and phthalates
- Handcrafted felt
- Water-based, nontoxic paint and finishes
- Recyclable packaging

Our Support System

Lovevery's stage-based support system for families includes the Play Guide that comes with every Play Kit, the Here with you blog, a Playtime & Activities hub, the "My New Life" podcast, and expert-backed tips and facts on their social channels @lovevery.

\$20 Off Promo Code: LOVEFISHER20
Code Duration: Valid through 12/31/22

Terms & Conditions: Use this code for \$20 off a new Play Kits Subscription (\$20 off when you Prepay for multiple Play Kits or \$10 off each of the first two Play Kits when you Pay per Kit). Valid for first-time subscribers only. Not combinable with other discount codes. Discount codes and coupons may not be shared, are not transferable, and may not be redeemed for cash. See our FAQs page at <https://lovevery.com/pages/help> for more details.

Fisher, DU and Community Events

Feeding Inservice

Join Joanie McMullen, one of our FIT Occupational will be holding an **inservice on eating and feeding** for infants – 24 months at Fisher on December 1 (5:30-7pm).

Use [this link](#) to learn more and RSVP.

Fisher Celebrating Families Board & PRIDE Flag – from Sean (CB Teacher)



Dear Fisher Community,
I am making a Celebrating Families Board outside my classroom and wanted to extend it to all Fisher families to celebrate the unique diversity we have at Fisher. I ask for family pictures from all the families at Fisher. I would just need one picture of whatever representation of family it is you would like celebrated.

Why a Pride Flag? It literally is part of the definition of Inclusion in DEI. For many people it represents safety – safety to be who they are, their authentic selves, and free to express themselves in a safe, loving, accepting space. I, and the Bunnies, want to extend our safe space and unconditional family love to you all. Please send photos to cowboybunnies@du.edu and check out the flag outside of the CB classroom!

Fisher Inclement Weather Procedures

The safety of Fisher's families and staff will be the primary consideration in keeping the school open or closed. The safety of everyone at Fisher is very important, as is the ability for children to be at school, and teachers and parents to work. Everyone's understanding is appreciated as we consider the balance between these priorities and make the best decision possible given the information at hand.

Fisher's decision-making process during inclement weather will always take into account DU and local school districts' decisions, including, but not limited to DPS.

- If there is a prediction for inclement weather (i.e. steady snowfall, freezing temps, etc.) overnight and/or into the morning hours, Fisher will most likely expect a delayed opening of 1-2 hours based on total accumulation and end time.
- If there is a prediction for inclement weather (i.e. steady snowfall, freezing temps, etc.) for the majority of the work day/Fisher operating hours, Fisher will most likely be closed that day.

For both of these scenarios, families will receive a message from Fisher's administrative staff by 10pm the day before the delay or closure.

- If it is far too difficult to make a decision until the morning, a message saying that will be shared by 10pm and a follow up confirmation of the decision will be sent by 5:30am the next morning.
- There may also be times that an early closure is necessary, and families will be informed of that with an expected arrival time within 1.5 hours of when the message is shared.

In the event of a closure, late start or early dismissal, the Center or your child's classroom will send an email informing families of our status. Fisher's status will be posted on all major television channels and their websites. We advise families, in any case, to check their email and Fisher's website during inclement weather for the most up-to-date information regarding whether or not Fisher is open. We encourage every staff member and family to exercise their best judgment during inclement weather situations.

